

# JASON MCCOY GALLERY

41 East 57<sup>th</sup> Street • New York 10022, 11<sup>th</sup> floor • 212. 319.1996 • www.jasonmccoyinc.com

**Master Drawings: Jackson Pollock, Lee Krasner, Paul Klee, Lee Bontecou, and others.**

*May 16 - July 1, 2016*

1



**Robert Mangold (B. 1937)**

*Untitled*, 1989  
Acrylic and pencil on handmade  
Fabriano paper  
Image size:  
30 3/8 x 44 1/2 inches  
77.2 x 113 cm  
Framed size:  
Signed and dated, recto, lower left:  
"R. Mangold 1989"  
RM5823

2



**Bob Thompson (1937-1966)**

*Study for "Expulsion and Nativity"*,  
1963  
Pastel on paper  
Image size:  
9 x 12 inches  
22.9 x 30.5 cm  
BT5836

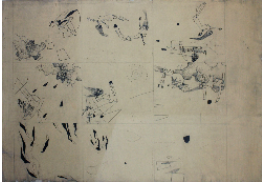
3



**Bob Thompson (1937-1966)**

*Untitled (Man in Hat)*, circa 1958  
Oil on paper  
Image size:  
13 1/2 x 10 3/5 inches  
34.3 x 26.9 cm  
BT5835

4



**Frederick Kiesler in Collaboration  
with Roberto Matta or Arshile  
Gorky\*\***

*Untitled*, circa 1942

Ink on paper

Image:

23 1/2 x 37 1/2 inches

59.7 x 95.3 cm

Framed size:

25 1/2 x 39 1/2 inches

64.8 x 100.3 cm

\*\*Inscribed by Lillian Kiesler, verso:

"given to Kiesler, Gorky drawing, LK

10/30"

mcc107

5



**Jackson Pollock (1912-1956)**

*Untitled (Number 65)*, 1939-40

Colored and lead pencil on paper

Image size:

14 x 11 inches

35.6 x 27.9 cm

Framed size:

23 x 18 inches

58.4 x 45.7

CR523

6



**Jackson Pollock (1912-1956)**

*Untitled*, 1939-40

Pencil and orange pencil on paper

Image size:

14 x 11 inches

35.6 x 27.9 cm

Framed size:

22 5/8 x 17 7/8 inches

57.5 x 45.4 cm

CR518

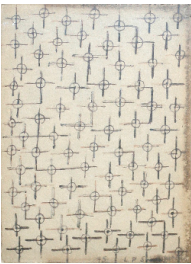
7



**Larry Rivers (1923-2002)**

*Berdie*, 1953  
Pencil on paper  
Image size:  
7 7/8 x 9 1/2 inches  
20 x 24.1 cm  
Framed size:  
15 x 16 5/8 inches  
38.1 x 42.2 cm  
Signed, recto, lower right:  
"Larry Rivers"  
LR5821

8



**Leon Polk Smith (1906-1996)**

*Untitled*, 1945  
Work on paper  
Image size:  
9 1/4 x 6 5/8 inches  
23.5 x 16.8 cm  
Framed size:  
17 7/8 x 15 inches  
45.4 x 38.1 cm  
Signed and dated, recto, lower center:  
"45 LPS"  
Signed, dated and inscribed, verso.  
LPS7364

9



**Lee Bontecou (B. 1931)**

*Untitled*, 1990  
Graphite on paper  
Image size:  
4 x 6 inches  
10.2 x 15.2 cm  
Framed:  
8 3/8 x 10 3/8 inches  
21.3 x 26.4 cm  
Signed, recto, lower right:  
"Lee Bontecou"  
LB8901

10



**František Kupka (1871-1957)**

*Woman Picking Flowers*, 1909-10

Ink, ink wash and pencil on paper

Image size:

8 3/4 x 8 1/2 inches

22.2 x 21.6 cm

Framed size:

16 3/4 x 17 1/8 inches

42.5 x 43.5 cm

Signed, recto, upper right:

"Kupka"

Another pencil sketch, verso.

FK7403

11



**Lee Krasner (1908 - 1984)**

*Seed No. 5*, 1969

Gouache on Howell paper

Image size:

34 x 23 inches

86.4 x 58.4 cm

Framed size:

47 x 35 inches

119.4 x 88.9 cm

Signed and dated, bottom left:

"Lee Krasner '69"

LK5690

12



**Will R. Barnet (1911 - 2012)**

*Midnight (Study for Midnight)*, circa 1983

Graphite on paper

Image size:

14 3/4 x 8 3/4 inches

37.5 x 22.2 cm

Framed size:

25 1/2 x 19 1/2 inches

64.8 x 49.5 cm

Signed, recto, lower right:

"Will Barnet"

WB5114

13



**Henri Matisse (1869-1954)**

*Untitled*, 1918

Pencil on paper

Image size:

10 1/2 x 7 1/2 inches

26.7 x 19.1 cm

Framed size:

20 3/4 x 17 1/4 inches

52.7 x 43.8 cm

Signed and dated, recto, lower left:

"Henri Matisse 1918"

HM8014

14



**Balthus (1908-2001)**

*Girl with Raised Hands (Michelina)*,  
1973

Pencil on paper

Image size:

15 3/4 x 11 3/4 inches

40 x 30 cm

Framed:

21 5/8 x 17 1/8 inches

54.9 x 43.5 cm

Signed, recto, lower center:

"Balthus"

B6131

15



**Larry Rivers (1923-2002)**

*O'Hara Reclining*, 1956

Pencil on paper

Image size:

17 3/4 x 20 1/2 inches

45.1 x 52.1 cm

Framed size:

25 x 28 inches

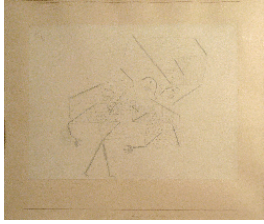
63.5 x 71.1 cm

Signed and dated, recto, lower right:

"Rivers 1956"

LR5820

16



**Paul Klee (1879-1940)**

*Kind (Kleine Fassung)*, 1930

Pencil on paper

Image:

8 1/2 x 10 3/4 inches

21.5 x 27.5 cm

Mount size:

16 3/8 x 17 1/8 inches

41.5 x 43.5 cm

Framed size:

21 1/8 x 21 1/4 inches

53.7 x 54 cm

Signed, recto, upper left: "Klee"

Signed, titled and dated on artist's mount:

"1930 U4 Kind (Kl. Fassung)"

PK8166

17



**Jean Hélion (1904-1987)**

*Suite puciere*, 1978

Watercolor, gouache, & colored chalk  
on paper

Image size:

12 1/4 x 17 1/4 inches

31.1 x 43.8 cm

Framed size:

17 x 22 1/8 inches

43.2 x 56.2 cm

Signed and dated, recto, upper right:

"28.II.78 Helion"

JH5832

18



**Charles Pollock (1902-1988)**

*Chapala Drawing 7*, 1956

Ink on Arches paper

Image size:

25 x 19 1/4 inches

63 x 49 cm

Framed size:

32 1/2 x 25 1/2 inches

82.5 x 65 cm

CP5428

19



**Jean Hé lion** (1904-1987)

*Spectacle*, 1939

Watercolor and ink on paper

Image size:

11 27/32 x 8 7/8 inches

30.1 x 22.5 cm

Framed size:

22 1/2 x 19 1/2 inches

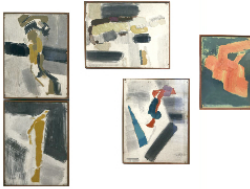
57.2 x 49.5 cm

Signed and dated, recto, lower left:

"H. 39"

JH5831

20



**Frederick Kiesler** (1890-1965)

*Galaxy*, 1959

Chinese ink, pen and oil on paper

mounted on board

Dimensions vary.

Signed on lower right panel, recto,

lower right:

"Kiesler"

FK9002

21



**Eileen Agar** (1899-1991)

*Untitled*, 1954

Watercolor, charcoal and wax crayon

with frottage

Image size:

8 x 12 inches

20.3 x 30.5 cm

Framed size:

16 1/4 x 20 7/8 inches

41.3 x 53 cm

Signed, recto, lower left:

"Agar"

EA5834

22



**Richard Lindner (1901–1978)**

*Boy*, 1954  
Crayon and pencil on paper  
Image size:  
9 x 7 inches  
22.9 x 17.8 cm  
Framed size:  
12 x 9 7/8 inches  
30.5 x 25.1 cm  
Signed, inscribed and dated, recto,  
lower right:  
"Merry Christmas to Becky + Bernhold  
19 Richard 54"  
RL5830

23



**Lee Bontecou (B. 1931)**

*Untitled*, 1983  
Pastel on paper  
Image size:  
9 3/8 x 12 1/4 inches  
23.8 x 31.1 cm  
Framed size:  
17 1/4 x 19 3/4 inches  
43.8 x 50.2 cm  
Signed and dated, recto, lower right:  
"Bontecou 1983"  
LB8900

24



**Richard Diebenkorn (1922-1993)**

*Untitled (Ocean Park)*, 1991  
Cut-and-pasted paper, cut-and-pasted  
paper, acrylic, charcoal, gouache, and  
crayon on joined paper  
Image size:  
37 1/2 x 25 inches  
95.3 x 63.5 cm  
Framed size:  
46 1/4 x 33 1/4 inches  
117.5 x 84.5 cm  
Dated, recto, lower right: "91"

Foundation/ Estate Number: RD2210  
RD9017